

# HUMBER STREET GALLERY

EXHIBITION  
GUIDE

## THOUGH THE LEAVES ARE MANY...

25 OCTOBER 2024 - 26 JANUARY 2026  
SPACE 1

Official Funding Partners



Supported using public funding by  
**ARTS COUNCIL  
ENGLAND**



# EXHIBITION TEXT

*Though The Leaves Are Many...* has been produced by artists who have been supported as part of our INTER\_CHANGE talent development programme. Over the past 12 months, the group have supported each other to collaborate, learn and consider the challenges and opportunities that arise in relation to being an early-career artist.

The title of the exhibition is an excerpt from a short poem by W B Yeates, *The Coming of Wisdom with Time*. It reflects on a deeper, often concealed, truth underpinning a surface of great variety. While the works in this exhibition take many and varied forms, the forces driving each artist to make them have been the same.

Working across a range of art-forms including painting, sculpture, ceramics, textiles and installation, the exhibition presents a cross section of new work being created by some of Hull's most promising artistic talent. The themes explored within the work are diverse yet universal and touch upon identity, storytelling, and our relationship with the natural world.

The artists in this exhibition are Bronte Teal, Harry Newman, Ian Hinley, Layla Jabbari and Maria Donnai.

## ABOUT THE ARTISTS

### BRONTE TEAL

Based at **Juice Studios**, Bronte Teal explores her experience of living with psoriasis through screen printing, textiles, and installation.

*Leaves in Flux* showcases a vast length of hand screen-printed organza fabric, chosen for its connection to clothing at memorable occasions, symbolising personal milestones over the past year. The fabric's delicate nature reflects the sensitivity of skin and the healing journey. Each print is unique, drawn from photographs of Bronte's condition, creating patterns that mirror the unpredictable nature of psoriasis.

The installation weaves together themes of physical healing and creative growth, offering an immersive experience.

## **HARRY NEWMAN**

A firm believer that creation is an act of worship to the very thing we are made of, Harry Newman uses a plethora of mixed media to welcome you into a reality of his own making, one that speaks to the truest part of the shared human experience and collective consciousness.

*The indestructible one* is an effigy depicting a soul in bloom. Acting as a tree of life, this dissolving form contains within it three aspects of the human condition: the rot, the shadow/ persona, and the source. The beast in its entirety is comprised of mainly foraged natural elements and once living matter. This primal imagery evokes a deep-rooted connection to everything around us, as well as the complexities within ourselves, in hopes of inspiring the viewer to harness their true potential.

## **IAN HINLEY**

Ian Hinley is an oil painter living and working in Hull who specialises in the human figure. His practice is grounded in rigorous technique and extensive research. The INTER\_CHANGE program has afforded him the freedom to make his most ambitious work to date, *Morpheus among the Dreams*, which considers the theme of liminality and the

contrasting comfort and pain of experiencing change.

In Ovid's *Metamorphoses*, Morpheus is one of the thousand Dreams commanded by the god of sleep and is famed for an ability to mimic perfectly the appearance of any human. Reading into this figure and others associated with transformation and sleep in ancient literature formed the impetus for the work.

Ian has worked with writer and curator Alexander Stubbs to produce the publication *Morpheus Appears* to support his painting, which can be found in the gallery space to read and keep.

## **LAYLA JABBARI**

Layla Jabbari is a Hull based artist of Iranian descent experimenting with mixed media to create animations that tell stories of the everyday people she meets.

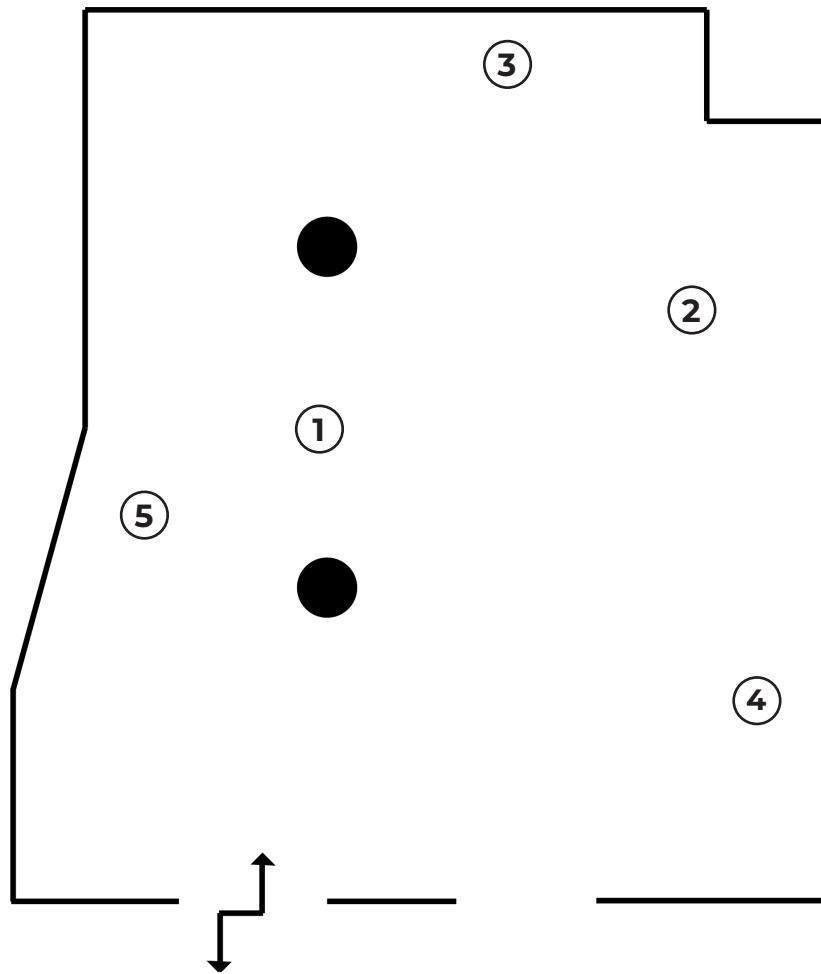
*Noosh-e-jaan* is a response to local food festival **HU3 Come to Tea**, celebrating the diversity and joy of food in the local community. *Noosh-e-jaan* is a persian term meaning 'May it be sweet for your soul'.

## **MARIA DONNAI**

Maria Donnai is a visual artist working primarily with porcelain and glass. Her work is influenced by her interest in natural history, museum collections and birds.

This piece consists of over 120 individual porcelain fragments, each one hand made, burnished, sanded and refined to create smooth tactile representations of bones. They are reminiscent of museum fossil displays, referring to extinction and encourage questions about the human impact on the natural world.

# FLOORPLAN



1. *Leaves in Flux*, Bronte Teal
2. *The indestructible one*, Harry Newman
3. *Morpheus among the Dreams*, Ian Hinley
4. *Noosh-e-jaan*, Layla Jabbari
5. Maria Donnai

# RELATED ACTIVITY

**INTER\_CHANGE CELEBRATION DAY**

**SUNDAY 1 DECEMBER 2024**

**10:30AM-2PM**

**HUMBER STREET GALLERY**

**DROP-IN, FREE**

Join us for a day-long celebration of INTER\_CHANGE 23/34. This is an opportunity to meet the artists involved in the programme and explore their exhibition via a vibrant schedule of workshops, complemented by a breakfast tour of *Though the Leaves Are Many...*

**~ FROM 10:30AM ~**

**Meet the artists! Breakfast and exhibition tour**

Start the day with an artist-led tour of our INTER\_CHANGE exhibition, *Though the leaves are many...*

Pastries and fresh juice will be provided free of charge.

**~ FROM 12PM ~**

**Mini prints with Bronte Teal and Layla Jabbari**

Don't throw it away! Get inky and have a go at making your own prints using Tetrapack. Join Bronte and Layla at Juice Studios on Humber Street from 12pm - 2pm. Drop-in, no booking required.

**Live Painting with Ian Hinley**

Join Ian in Space 1 as he performs a live painting exercise,

drawing on the visual and contextual themes within *Though the leaves are many....*

## **Bones and Beads with Maria Donnai and Harry Newman**

Using easy to handle air dry clay and plasticine, Maria invites you to create a set of bones to take away with you.

Then, using beads, found fossils and pebbles, enjoy the process of tying and twisting knots as Harry guides you through how to create charms, reflecting the labour and thinking behind their practices.

*Works by the exhibiting artists will also be available for sale on the day.*

# ABOUT US

Humber Street Gallery is an Absolutely Cultured project.

Originally established in 2017 as part of the City of Culture programme, it has developed into a vibrant, high-quality contemporary visual art space for Hull. It is now a significant contributor to the contemporary visual arts offer in the north.

Our ambition for Humber Street Gallery is to further develop the venue into a multi-artform and multifunctional creative centre, showcasing a wide range of art and activities providing something for everyone from visual art, dance, music to spoken word. Increasingly the space will be used to showcase more work by local as well as national and international practitioners.

We also aim to develop more visual art programming that happens outside of the gallery in the city's public spaces, in underused buildings and in local neighbourhoods.

---

## CONTACT US

Humber Street Gallery  
64 Humber Street  
Hull  
HU1 1TU

[absolutelycultured.co.uk/  
humberstreetgallery/](http://absolutelycultured.co.uk/humberstreetgallery/)  
[info@absolutelycultured.co.uk](mailto:info@absolutelycultured.co.uk)  
01482 323 484

Absolutely Cultured is a registered charity.

If you would like to support our work, you can do so at [absolutelycultured.co.uk](http://absolutelycultured.co.uk)



[@humberstreetgallery](https://www.instagram.com/humberstreetgallery)



[@humberstreetgallery](https://www.facebook.com/humberstreetgallery)



[@humberstgallery](https://www.twitter.com/humberstgallery)

## OPENING TIMES

Wednesday: 10:30am - 5pm  
Thursday: 12pm - 7pm  
Friday: 10:30am - 5pm  
Saturday: 10:30am - 5pm  
Sunday: 10:30am - 5pm