

HUMBER
STREET
GALLERY

EXHIBITION GUIDE

**INTER_CHANGE
SHOWCASE**

ANTHONY ATTWOOD
CLAIRE HOLDITCH
EMILY OETEGENN
GEORGE WELCH
LUKE BEECH
NATASHA MONFARED
PHEOBE RILEY LAW
RAELLE MARSHALL
SEAN AZZOPARDI
TONKS

20 APRIL - 12 JUNE 2022
SPACE 2

INTRODUCTION

This showcase presents work that has been produced by artists who have been supported as part of our INTER_CHANGE talent development programme. Over the past 12 months, the group have supported each other to collaborate, learn and consider the challenges and opportunities that arise in relation to being an early-career artist.

Working across a range of artforms including painting, sculpture, performance, video game design, spoken word, music and installation, the INTER_CHANGE Showcase presents a cross section of new work being created by some of Hull's most promising artistic talent. The themes explored within the work are diverse yet universal and touch upon identity, conflict, activism and our relationship with the natural world.

With a background in illustration, music production and video game design, Anthony Attwood creates immersive experiences which combine sophisticated computer-generated imagery alongside more traditional textures reminiscent of oil painting. Attwood often defines himself as a 'skilled generalist', allowing him to combine various approaches, borrowing from different disciplines and remixing them to produce something entirely new.

As a musician, Claire Holditch's work involves mixing sampled and electronic sounds with live flute playing to create music which spans a variety of genres. She enjoys exploring the capabilities of the flute, using traditional playing alongside extended techniques such as singing and playing, pitch bending and beatboxing. She is also interested in taking existing ideas, whether musical or otherwise, and combining them with other, often contrasting concepts to create something new.

Working predominantly through spoken word and poetry, Emily Oetegenn combines elements of the personal and the political within her performances, films and written work. Often exploring ideas around access, inclusion and acceptance, the work aims to challenge preconceived notions of the disabled community as well as taking audiences on an emotional journey through stories of vulnerability and empowerment.

As a painter, George Welch's work is a direct expression of his surroundings and the feelings that they evoke. His work combines elements of figurative painting and abstract techniques and rather than aiming to present a clear story, he thinks of his work as ever evolving, acting as an experimental way to prompt audiences to ask more questions about the work and their relationship with the world around us.

Luke Beech is an artist and educator using performance and visual art techniques to explore madness, queerness and the body. Drawing on his own experience, he relates to wider social issues and creates subtle and sensitive work, often using film, performance and photography, amongst others, aiming to provoke a visceral engagement with the work.

Mainly working in sculpture, Natasha Monfared's work highlighting the struggles faced by women in Iran, whether that the laws around wearing the hijab or banning women from attending sports stadiums. One of her aims is to raise awareness by giving a voice to Iranian women. Monfared often uses military symbols and subverts them by experimenting with materials such as lipstick to question the role gender plays in conflict.

Working with sound, film, installation, textiles and movement, Pheobe Riley Law explores how reframing and dismantling objects and environments can highlight how the world around us is constructed. Her most recent work has focused on themes such as protectionism, barriers, borders and climate change, with particular attention being paid to how changes in the salt content of our oceans may be having a profound impact on distinct species across the world.

Based in Liverpool, **Raelle Marshall** works with a range of different materials to explore themes around climate change, migration, location and the legacies of colonialism. Her most recent work has taken the form of large textile pieces which examine similarities between Hull and Liverpool as sites for import and export as well as their proximity to water. Much of the materials used in Marshall's works are re used and re cycled plastics and textiles, aiming to question our approach to our 'single use' culture and its impact on the planet.

Specialising in painting and graphic media, Sean Azzopardi works on a range of different scales, from small zine and comic book publishing to large scale painting and more recently expanding into multimedia installations. His most recent work intends to look at protest throughout history and how the visuals used have influenced contemporary movements such as street art.

Tonks' current work uses sculpture and installation, including both digitally rendered and printed as well as ceramics works to explore gender expression, both their own identity as a queer/trans artist and the experience and histories of the broader queer/trans culture. Their current focus is around how colonialism has halted queer/trans cultures

ABOUT INTER_CHANGE

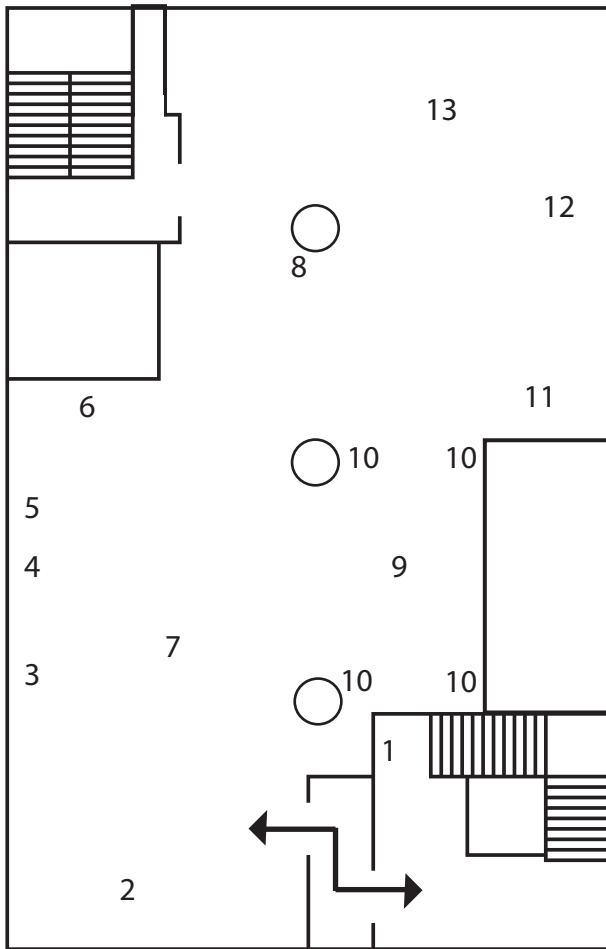
INTER_CHANGE is a new 12-month programme which will supporting a group of local creatives at the start of their careers, offering professional assistance and guidance. Those aged 18 and over living in Hull or the surrounding areas in the beginnings of a career in the arts, no matter the medium, were invited to apply. Our 2021 cohort are benefitting from mentoring, peer to peer sessions and exchange visits with other creatives and organisations in the North of England. Along with real practical support, INTER_CHANGE provides an environment to share ideas and to build stronger networks that can open up opportunities, lead to collaboration and enable the exchange of work in and out of Hull. Over the next year, INTER_CHANGE will also offer a series of masterclasses covering topics such as funding opportunities, making applications and budgeting. At the end of the programme, participants will showcase their work at Humber Street Gallery.

THANK YOU

The artists and Absolutely Cultured would like to thank the following people for their continued support:

David Priestman
Steve Potter

WORK DETAILS, SECOND FLOOR



11. Anthony Attwood

12. Luke Beech

13. Raelle Marshall

INTER_CHANGE SHOWCASE: SPACE 2

1. Claire Holditch

2. Pheobe riley Law

3. George Welch

4. George Welch

5. George Welch

6. Emily Oetegenn

7. Natasha Monfared

8. Sean Azzopardi

9. Tonks

10. Claire Holditch

RELATED ACTIVITY

Access our in person and online public programme to learn more about the artists and the exhibition. You can book access all of the related activity by following the links on the [exhibition page](#).

EXHIBITION LAUNCH PARTY
THURSDAY 28 APRIL, 6PM - 9PM
HUMBER STREET GALLERY
NO BOOKING REQUIRED

Join us to celebrate the opening of our latest exhibitions at Humber Street Gallery, An-
kles Absorbing Ash by Harinder Judge and our INTER_CHANGE Showcase.

This event is a chance to meet the artists, visit both exhibitions and to bring people to-
gether from across the city for a drink or two.

THURSDAY LATES: INTER_CHANGE SPECIAL
THURSDAY 26 MAY, 7PM - 9PM
HUMBER STREET GALLERY
BOOKING REQUIRED

An evening of new performance work by artists who are currently taking part in our
INTER_CHANGE artist development programme. Expect to see spoken word, poetry
and live musical performances by some of Hull's most exciting artistic talent. The artists
who will be performing are also presenting new work as part of an exhibition in Space 2
at Humber Street Gallery from April, alongside other creatives who are part of our IN-
TER_CHANGE programme.

INTER_CHANGE SYMPOSIUM
SATURDAY 11 JUNE, 10AM - 4PM
HUMBER STREET GALLERY
BOOKING REQUIRED

A day of talks, workshops and discussion around supporting artists, collectivism and col-
laboration. The symposium will take place within the INTER_CHANGE Showcase exhi-
bition at Humber Street Gallery and will explore similar themes that are present within
the artist's work. This event has been funded by Art Fund.

ABOUT US

Humber Street Gallery is an Absolutely Cultured project. Originally established in 2017 as part of the City of Culture programme, it has developed into a vibrant, high-quality contemporary visual art space for Hull. It is now a significant contributor to the contemporary visual arts offer in the north.

Our ambition for Humber Street Gallery is to further develop the venue into a multi-artform and multi-functional creative centre, showcasing a wide range of art and activities providing something for everyone from visual art, dance, music to spoken word. Increasingly the space will be used to showcase more work by

OPENING TIMES

GALLERY

WED - SUN: 10:00 – 17:00

GALLERY CAFÉ

Wed – Sun: 10:00 – LATE

GLOSSARY

1. Anthropomorphic
Is the attribution of human traits, emotions, or intentions to non-human entities.
2. Mercurial
Subject to sudden or unpredictable changes of mood or mind.
3. Unmoor
To disconnect or release from original intention or meaning.
4. Idiosyncrasies
A strange or unusual habit, way of behaving or feature.

CONTACT US

Humber Street Gallery
64 Humber Street
Hull
HU1 1TU

[absolutelycultured.co.uk/
humberstreetgallery/
info@absolutelycultured.co.uk](http://absolutelycultured.co.uk/humberstreetgallery/)
01482 323 484

Get the latest updates by following Humber Street Gallery on our official social media channels.

INSTAGRAM [@humberstreetgallery](https://www.instagram.com/humberstreetgallery)
FACEBOOK [@humberstreetgallery](https://www.facebook.com/humberstreetgallery)
TWITTER [@humberstgallery](https://twitter.com/humberstgallery)

Absolutely Cultured is a registered charity. If you would like to support our work, you can do so at absolutelycultured.co.uk

Official Funding Partners

